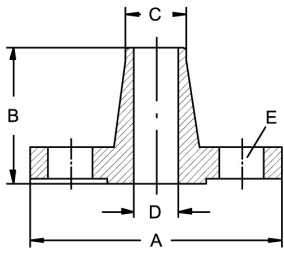


Welding neck flanges EN 1092-1

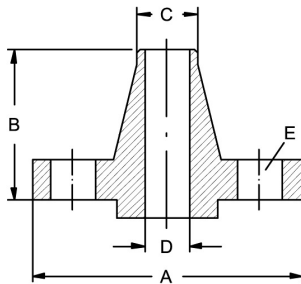
Art.No EUR Art.No EUR

Welding neck flange ASME B 16.5, 300 lbs



DN	A	B	C	D	E	AISI316L-1.4435	AISI316Ti-1.4571		
1/2"	95	53	21,3	15,8	4xø15,9	468301	Enquiry	466601	Enquiry
3/4"	115	58	26,7	20,9	4xø19,1	468302	Enquiry	466602	Enquiry
1"	125	62	33,4	26,6	4xø19,1	468303	Enquiry	466603	Enquiry
1,25"	135	66	42,2	35,1	4xø19,1	468313	Enquiry	466613	Enquiry
1,5"	155	69	48,3	40,9	4xø22,3	468304	Enquiry	466604	Enquiry
2"	165	70	60,3	52,5	8xø19,1	468305	Enquiry	466605	Enquiry
2,5"	190	77	73	62,7	8xø22,3	468306	Enquiry	466606	Enquiry
3"	210	80	88,9	77,9	8xø22,3	468307	Enquiry	466607	Enquiry
3,5"	230	81	101,6	90,1	8xø22,3	468337	Enquiry	466637	Enquiry
4"	255	86	114,3	102,3	8xø22,3	468308	Enquiry	466608	Enquiry
5"	280	99	141,3	128,2	8xø22,3	468310	Enquiry	466610	Enquiry
6"	320	99	168,3	154,1	12xø22,3	468311	Enquiry	466611	Enquiry
8"	380	112	219,1	202,7	12xø25,4	468312	Enquiry	466612	Enquiry
10"	445	118	273	254,6	16xø28,6	468346	Enquiry	466646	Enquiry
12"	520	131	323,8	304,8	16xø31,8	468348	Enquiry	466648	Enquiry

Welding neck flange ASME B 16.5, 600 lbs



DN	A	B	C	E	AISI316L-1.4435	AISI316Ti-1.4571		
1/2"	95	52	21,3	4xø15,9	468401	Enquiry	466801	Enquiry
3/4"	115	57	26,7	4xø19,1	468402	Enquiry	466802	Enquiry
1"	125	62	33,4	4xø19,1	468403	Enquiry	466803	Enquiry
1,25"	135	67	42,2	4xø19,1	468413	Enquiry	466813	Enquiry
1,5"	155	70	48,3	4xø22,3	468404	Enquiry	466804	Enquiry
2"	165	73	60,3	8xø19,1	468405	Enquiry	466805	Enquiry
2,5"	190	79	73	8xø22,3	468406	Enquiry	466806	Enquiry
3"	210	83	88,9	8xø22,3	468407	Enquiry	466807	Enquiry
3,5"	230	86	101,6	8xø25,4	468437	Enquiry	466837	Enquiry
4"	275	102	114,3	8xø25,4	468408	Enquiry	466808	Enquiry
5"	330	114	141,3	8xø28,6	468410	Enquiry	466810	Enquiry
6"	355	117	168,3	12xø28,6	468411	Enquiry	466811	Enquiry
8"	420	133	219,1	12xø31,8	468412	Enquiry	466812	Enquiry
10"	510	152	273	16xø35	468446	Enquiry	466846	Enquiry
12"	560	156	323,8	20xø35	468448	Enquiry	466848	Enquiry

D on demand